

Engineered for Excellence in Diesel Genset & Fire Fighting



Electronic System Engineering (ESE) Services

Since 1989, Twintech is a solution oriented company, offering Electronic System Engineering (ESE) Services.

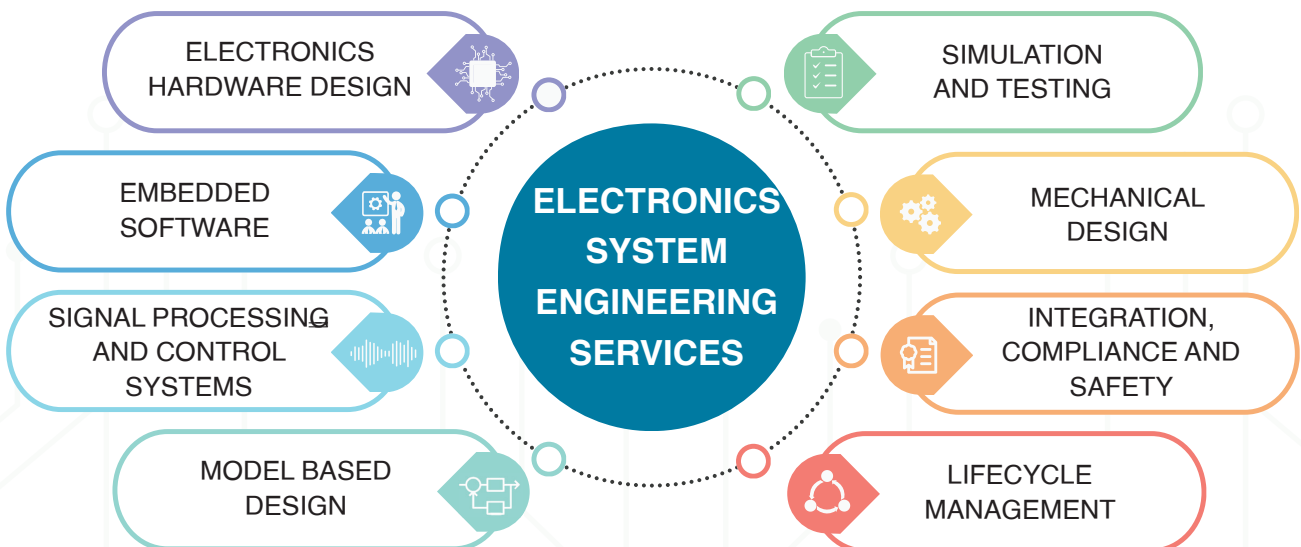
ESE is a multidisciplinary field focused on designing, developing and managing complex electronic systems.

It involves integrating multiple engineering domains such as electronics, software, mechanical, and control engineering to create systems that meet specific performance, functionality and reliability requirements.

This engineering process encompasses the entire lifecycle of an electronic product from concept and feasibility studies to design, manufacturing, deployment and maintenance.

“ Switching to import substitute parts was one of the best decisions I’ve made. Not only are they cost-effective but the support from the Twintech team has been outstanding.”

“ Their innovative approach to product development allowed us to create unique offerings that resonated with our customers.”



Our Clients



Diesel Genset & Fire Fighting :

Twintech Control Systems Pvt. Ltd. has established a strong reputation and nationwide presence in India's Diesel Genset & Fire Fighting sectors. The company specializes in designing and manufacturing electronic products tailored for these industries, including:

- 1). Magnetic Speed Sensor
- 2). Digital Hourmeter
- 3). Digital Tachohourmeter
- 4). Digital RPM Indicator
- 5). Digital Solid State Potentiometer (DPS)
- 6). Diesel Engine Safety Control Test Kit

With a robust network of over 100 associates across India, Twintech ensures widespread distribution and support for its products. Their commitment to innovation and quality has solidified their standing in this sector.

For detail information please visit to our website- www.twintechcontrols.com

Magnetic Speed Sensor types-5/8" 18UNF (MOQ 30 Nos.)



GRUS SPEED SENSOR

- Threading Length: 50 / 76 / 114 mm
- Sensor Connector : 2 Pin Male Military Style connector
- Cable Length : 2M long with Female Connector
- Coil Resistance : 800 to 1500 Ω



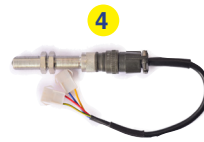
Part No. TCUMPU3272

- Threading Length: 80 mm
- Sensor Connector : Same as expect to Mating Military style Connector
- Cable Length : 2M
- Coil Resistance : 300 to 1500 Ω



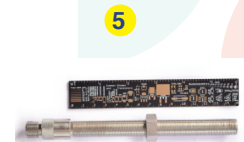
Part No. TCUMPU5360

- Threading Length: 76 mm
- Sensor Connector : Inbuilt 2 pin bush female + male harness
- Cable Length : 300 mm
- Coil Resistance : 1000 to 1500 Ω



Part No. TCUMPU5447

- Threading Length: 76 mm
- Sensor Connector : Military style connector 4 way Male+Female
- Cable Length : 300 mm
- Coil Resistance : 1000 to 1500 Ω



ARA SPEED SENSOR

- Threading Length: 50/ 76/114/152 mm
- Sensor Connector : 2 Pin Male Assembly as mating with MS connector
- Cable Length : 2 Meters long with Female MS Connector
- Coil Resistance : 800 to 1500 Ω

Sr. No.	Twintech Part No.	Threading	Threading Length	Sensor Connector	Cable Length	Coil Resistance
6	TCUMPU4838	5/8 " 18UNF	35 mm	3 way Power lock Connector	135 mm	1.0K to 1.5K Ω
7	TCUMPU4572	5/8 " 18UNF	83 mm	Teflon wires + 3 way powerlock Connector	205 mm	300 to 1.5K Ω
8	TCUMPU5824	5/8 " 18UNF	80 mm	Military style Connector M+F	2 meters	800 to 1.6K Ω
9	TCUMPU4573	5/8 " 18UNF	127 mm	Teflon wires + Packard Connector	205 mm	1.0K to 1.5K Ω
10	TCUMPU1360	5/8 " 18UNF	76 mm	Military style Connector 4 Way M+F	300 mm	1.0K to 1.5K Ω
11	TCUMPU2915	5/8 " 18UNF	35 mm	Wires + 3 way Power lock Connector	135 mm	1.0K to 1.5K Ω
12	TGRMPU0793	5/8 " 18UNF	35 mm	Wires + 3 way Power lock Connector	135 mm	1.0K to 1.5K Ω

Magnetic Speed Sensor types- 3/4" 16UNF (MOQ 30 Nos.)



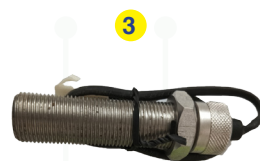
Part No. TCUMPU7092

- Threading Length: 76 mm
- Sensor Connector : Military style Connector M+F
- Cable Length : 2 meters
- Coil Resistance : 800 to 1.6K Ω



Part No. TCUMPU5417

- Threading Length: 76 mm
- Sensor Connector : 2 pin bush female inbuilt + male harness
- Cable Length : 300 mm
- Coil Resistance : 300 to 1.5K Ω



Part No. TCUMPU4141

- Threading Length: 76 mm
- Sensor Connector : Teflon wires leads + 3 way powerlock connector
- Cable Length : 300 mm
- Coil Resistance : 1.0K to 1.5K Ω



Part No. TCUMPU2304

- Threading Length: 76 mm
- Sensor Connector : Military style connector 4 way M+F
- Cable Length : 300 mm
- Coil Resistance : 1.0K to 1.5K Ω



CARINA SPEED SENSOR DO-MPU

- Threading Length: 90 mm
- Sensor Connector : 1 Sqmm Black Wires
- Cable Length : 600 mm
- Coil Resistance : 800 to 1.5 K Ω
- Output : Dual

Sr. No.	Twintech Part No.	Threading	Threading Length	Sensor Connector	Cable Length	Coil Resistance
6	TCUMPU9524	3/4 " 16UNF	83 mm	2 Pole Packard Connector	205 mm	1.0K to 1.5K Ω
7	TCUMPU9525	3/4 " 16UNF	127 mm	2 Pole Packard Connector	205 mm	1.0K to 1.5K Ω
8	TCUMPU3007	3/4 " 16UNF	45 mm	2 Core Shielded + 3 way power lock connector	200 mm	1.0K to 1.5K Ω

200+ types of MPU Available all over India through 100 Associates

www.twintechcontrols.com/

Diesel Genset & Fire Fighting :

M12 THREADS

(MOQ 30 Nos.)



TRI HALL SPEED SENSOR M 12 X 1

- Threading Length: 60 /100 /120 mm
- Sensor Connector : N.A. Teflon wires 3 core
- Cable Length : 1 Meters
- Output : Square Wave

M16 THREADS

(MOQ 30 Nos.)



Part No. TKMPU28 M16

- Threading Length: 82 mm
- Sensor Connector : .5 sq.mm and 2 pole connector 110 series Female
- Cable Length : 200 mm
- Coil Resistance : 1 K to 1.5K Ω



Part No. TKDMPU29 Dual Output M16

- Threading Length: 82 mm
- Sensor Connector : Wires leads + 2 pole connector 110 series Female
- Cable Length : 100 mm
- Coil Resistance : 1.0K to 1.5K Ω

New Digital Hourmeter

(MOQ 50 Nos.)



DIGITAL HOUR METER

Part No. TDHM3700

- Supply : 9-60 V. DC
- Input : 12-24 V. DC Max 60 V. DC
- Display : LCD Display 6 digits with Back light
- IP : 65
- Cut out size : 52 mm Dia

Digital Tachour Meter (MOQ 10 Nos.)



Digital Tachour meter with Inbuilt Battery

Part No. DTHM2700

- Supply : Inbuilt Battery
- Input : MPU/ Hall effect
- Display : Single 4 & 1/2 LCD Display
- Hours : Press Button for Hours
- Teeth gear Calibration : Factory Set
- Connection : 2 Studs of M5
- Cut-Out Size : 85 mm Dia
- Mounting Clamp : C Clamp
- Overspeed : N.A



Digital Tachour meter Adjustable Overspeed

Part No. DTHMOS2700-BTL

- Supply : 8 to 36 VDC
- Input : MPU/ Hall effect
- Display : Dual Display 4 Digit LCD & 6 Digit LCD Display
- Hours : Separate Display for Hours
- Teeth gear Calibration : Using Android App
- Connection : 9 Pin Connectors
- Cut-Out Size : 85 mm Dia
- Mounting Clamp : C Clamp
- Overspeed : Set by Android App



Digital Twin Tachourmeter

Part No. DTHM2700-BTL

- Supply : 8 to 36 VDC
- Input : MPU/ Hall effect
- Display : Dual Display 4 Digit LCD & 6 Digit LCD Display
- Hours : Separate Display for Hours
- Teeth gear Calibration : Using Mobile App
- Connection : 4 Studs
- Cut-Out Size : 85 mm Dia
- Mounting Clamp : C Clamp
- Overspeed : N.A



CAT Tachour Meter

Part No. TCPDTM7810

- Supply : 8 to 36 VDC
- Input : MPU/ Hall effect
- Display : Single 4 & 1/2 LCD Display
- Hours : N.A
- Teeth gear Calibration : Specific Teeth Set by backside switches
- Connection : 9 Pin Connectors
- Cut-Out Size : 85 mm Dia
- Mounting Clamp : C Clamp
- Overspeed : Factory set

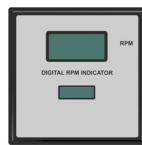
Digital RPM Indicator (MOQ 10 Nos.)



RPM indicator LCD Display

Part No. DRI2700-118

- Supply : 8 to 36 VDC
- Input : MPU
- Display : LCD 4 Digits
- Output : N.A
- Teeth gear : Factory Set @ 118 TG
- Connection : Screw Terminals
- Overspeed : N.A
- Size: 96 X 96 X 50 mm



RPM Hour Indicator Led Seven segment display

Part No. DRHI2700-118

- Supply : 8 to 36 VDC
- Input : MPU
- Display : RED Led 4 Digits Seven Segment
- Hours : Separate Display
- Output : N.A
- Teeth gear : Factory Set @ 118 TG/
- Connection : Screw Terminals
- Overspeed : N.A
- Size: 96 X 96 X 50 mm



Programmable RPM indicator

Part No. DRI2700-PI

- Supply : 8 to 36 VDC
- Input : MPU
- Display : RED Led 4 Digits Seven Segment
- Output : 4 TO 20 mA
- Teeth gear : Programmable
- Connection : Screw Terminals
- Overspeed : upto 3
- Size: 96 X 96 X 110 mm



RPM Indicator with Adjustable Overspeed

Part No. DRI2700-OS

- Supply : 8 to 36 VDC
- Input : MPU
- Display : RED 7 Segment LED Display
- Output : N.A
- Teeth gear : Factory Set
- Connection : Screw Terminals
- Factory Set : 1
- Size : 96 X 96 X 125 mm

200+ types of MPU Available all over India through 100 Associates

www.twintechcontrols.com/

Diesel Genset & Fire Fighting :

Digital Solid State Potentiometer (DPS) (MOQ 10 Nos.)



Single Channel DPS for DG Synchronizing Panel
Part No. TCUDPS-05 /03

- Supply : 12 - 32 VDC
- Output : -3 to +3 VDC /
- Display : RED 7 Segment LED Display
- Control : Front switches raise + lower and remote for PLC
- Connection : Terminals
- Resolution : 0.01 / 0.1
- Mounting : Panel Mount
- Cut out Size : 92x92 mm



Single Channel DPS for DG Synchronizing Panel
Part No. TCUDPS-05 /03

- Supply : 12 - 32 VDC
- Output : 0 to 5V DC / -
- Display : RED 7 Segment LED Display
- Control : Front switches raise + lower and remote for PLC
- Connection : Terminals
- Resolution : 0.01 / 0.1
- Mounting : Wall Mount



Dual Channel DPS for DG Synchronizing Panel
Part No. TCUDDPS-53

- Supply : 12 - 32 VDC
- Output : 0 to 5VDC & -3 to +3 VDC
- Display : 2 Separates RED 7 Segment LED Display
- Control : Front switches raise + lower and remote for PLC
- Connection : Terminals
- Resolution : 0.01 / 0.1
- Mounting : Panel Mount
- Cut out Size : 92x187 mm

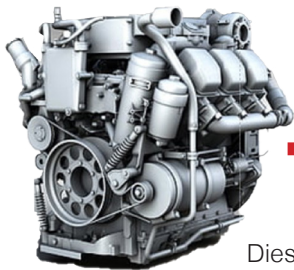


Dual Channel DPS for DG Synchronizing Panel
Part No. TCUDDPS-53

- Supply : 12 - 32 VDC
- Output : 0 to 5VDC & -3 to +3 VDC
- Display : 2 Separates RED 7 Segment LED Display
- Control : Front switches raise + lower and remote for PLC
- Connection : Terminals
- Resolution : 0.01 / 0.1
- Mounting : Wall Mount

Diesel Engine Safety Control Test Rig Kit

Twintech Developed & Approved by Cummins
Diesel Engine Safety Control Test Rig Kit



Diesel Engine

These 3 Safety Switches can be tested using this NABL Calibrated Safety Control Test Kit



1. Temperature Switch



2. Overspeed Switch



3. Low Lube Oil Pressure Switch



1. Temperature Safety Control Device Test Rig.
2. Over-Speed Safety Control Device Test Rig.
3. Pressure Safety Control Device Test Rig.
4. Tool Box

Benefits

Helpful for service Engineers to identify working switches on site

Testing of safety switches before engine commissioning

Using twintech safety kit an engineer can test all three safety control devices on site.

Twintech Safety kit is easy to use & portable set of Test Rigs.

Helpful for periodical maintenance of Diesel Generators

Applications

1 Routine Maintenance and Inspection

2 Fault Diagnosis and Troubleshooting

3 Performance Testing

4 Training and Education

200+ types of MPU Available all over India through 100 Associates

Get In Touch

+91 7066481148/ +91 7066481149

Plot No 19, Krutadnyata, Jadhavnagar, Vadgaon Bk, Pune 411041, Maharashtra (INDIA)



sales@twintechcontrols.com
sales1@twintechcontrols.com



www.twintechcontrols.com